

# State of Wyoming Corner Record

(In compliance with the *CORNER PERPETUATION AND FILING ACT*, Wyoming Statutes, 1997 Section 33-29-140 et. seq., and the Rules and Regulations of the Board of Professional Engineers and Professional Land Surveyors)

Reverse side of this form may be used if more space is needed.

Record of original survey and citation of source of historical information (if corner is lost or obliterated). Description of corner monumentation evidence found and/or monument and accessories established to perpetuate the location of this corner. Sketch of relative location of monument, accessories, and reference points with course and distance to adjacent corner(s) (if determined in this survey). Method and rationale for reestablishment of lost or obliterated corner.

**LOCATION:** Northeast Corner of Section 2, T13N, R66W, 6th Principal Meridian, Laramie County.

**RECORD:** GLO - Set limestone 24x10x3

1978 - Plat of Rocky Mountain Industrial Park Addition, Third Filing shows a 6x7 granite boulder with "x" on top and grooves marking the corner location. The distance between the northeast corner of section 2 and the east quarter of section 2 is shown as 2635.93.

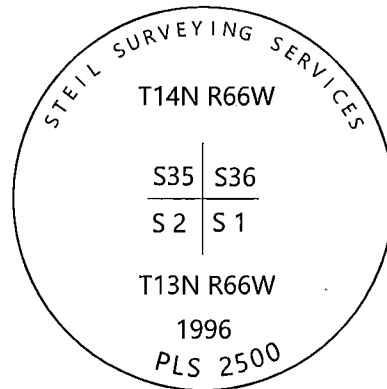
1979 - Sun Valley Addition, Thirteenth Filing shows a 6x7 granite boulder with "x" on top and grooves marking the corner location.

1980 - Control Surveys & Engineering Survey of Lands shows a GLO monument found but gives no distance to adjacent corners.

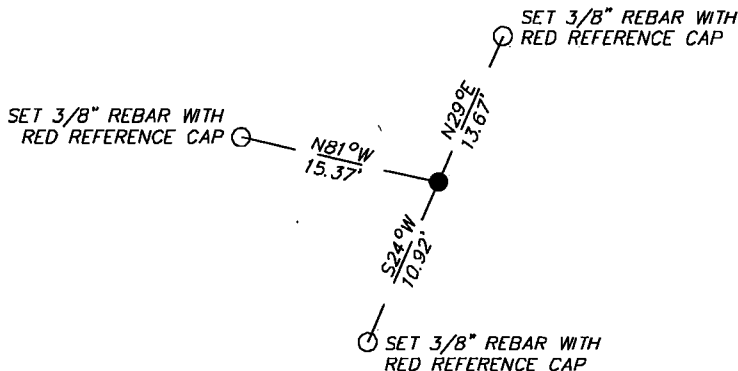
2007 - J.L. Ranch by S.D. Dawson, LS 555, shows a monument at the corner and gives a distance of 5269.62 feet to the Southeast corner of section 2. The copy is hard to read but looks like it may indicate the stamping of LS 2500.

**RECOVERED:** 2019 - Westwood field crews recover a 3.5" aluminum capped monument stamped LS 2500 with no corner record found.

**RESET:** The location of the monument agrees with record distance from 1978 Plat to the southeast corner of section 2. Accepting location of the monument as the best available evidence of the corner location. Set ties as shown.



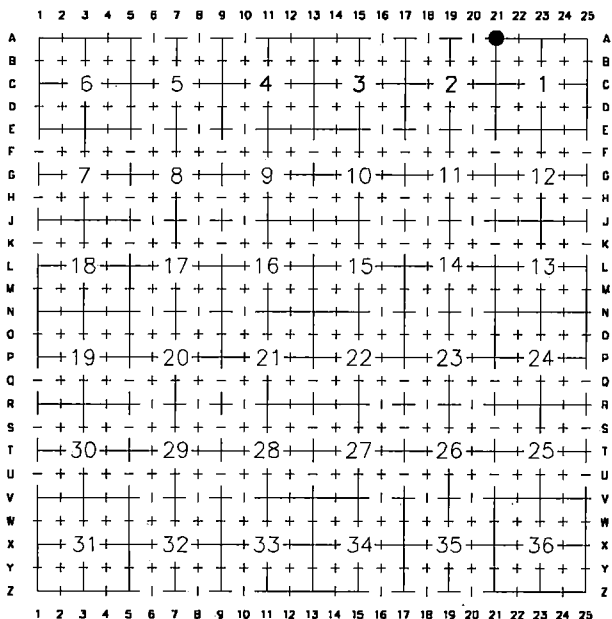
## Monument Inscription



Date of Field Work: 9/8/2019

Office Reference: 22237.02

### Cross Index Plat



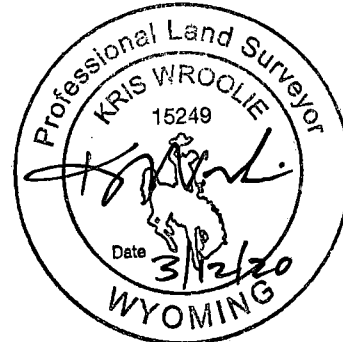
Firm/Agency, Address

Westwood Professional Services  
 3701 12th St. N. Ste. 206  
 St. Cloud, MN 56303

This corner record was prepared by me or under my direction and supervision.

*SEAL & SIGNATURE*

Telephone Number: (320)-253-9495



RECP #: 775809  
 RECORDED 4/15/2020 AT 10:14 AM BK# 2668 PG# 241  
 Debra K. Lee, CLERK OF LARAMIE COUNTY, WY PAGE 1 OF 1

Corner Name Northeast Corner Section 2, T 13 N, R 66 W, 6th P.M.

Cross-Index No.: A-21

County: Laramie Wyoming

SBRPEPLS/PLSW: March 1994; PLSW January 1998